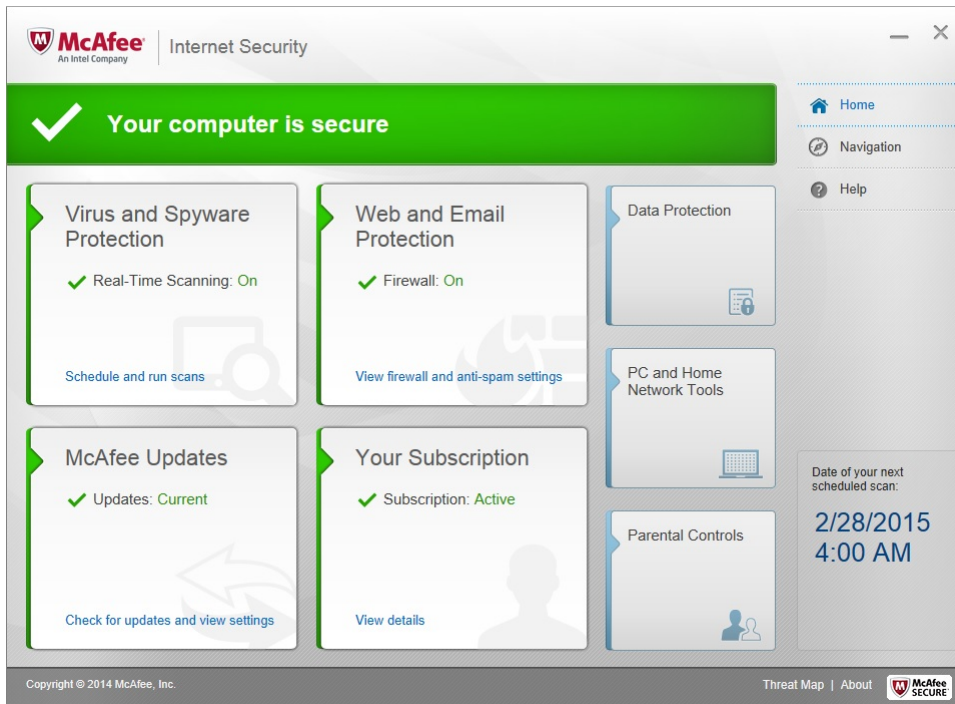
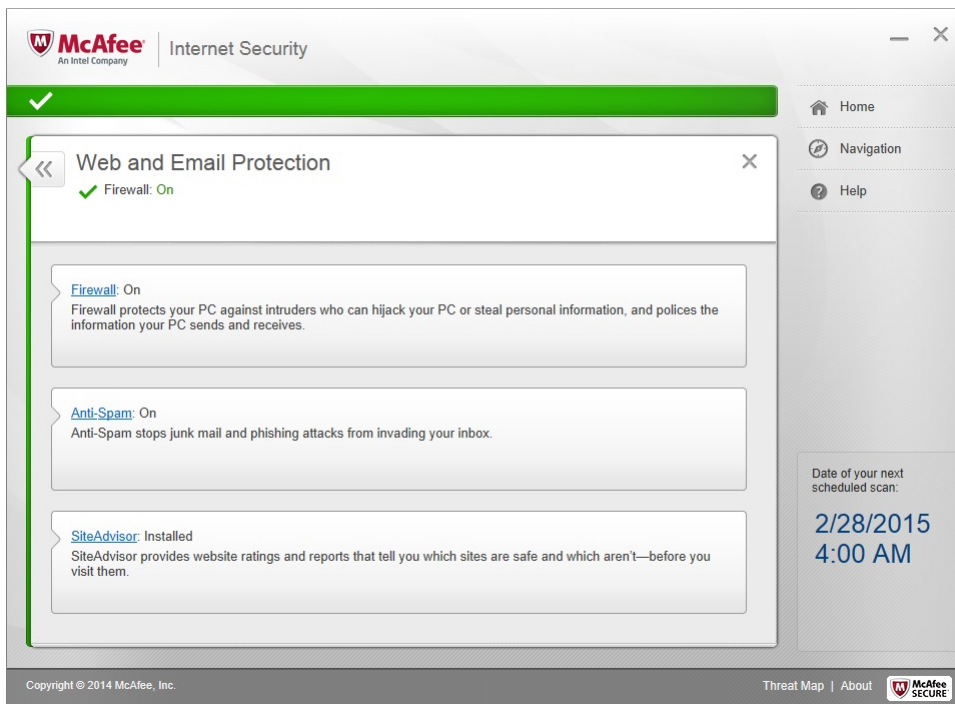


Configuring McAfee Windows Firewall to enable Gabriel (McAfee Version 14.0)

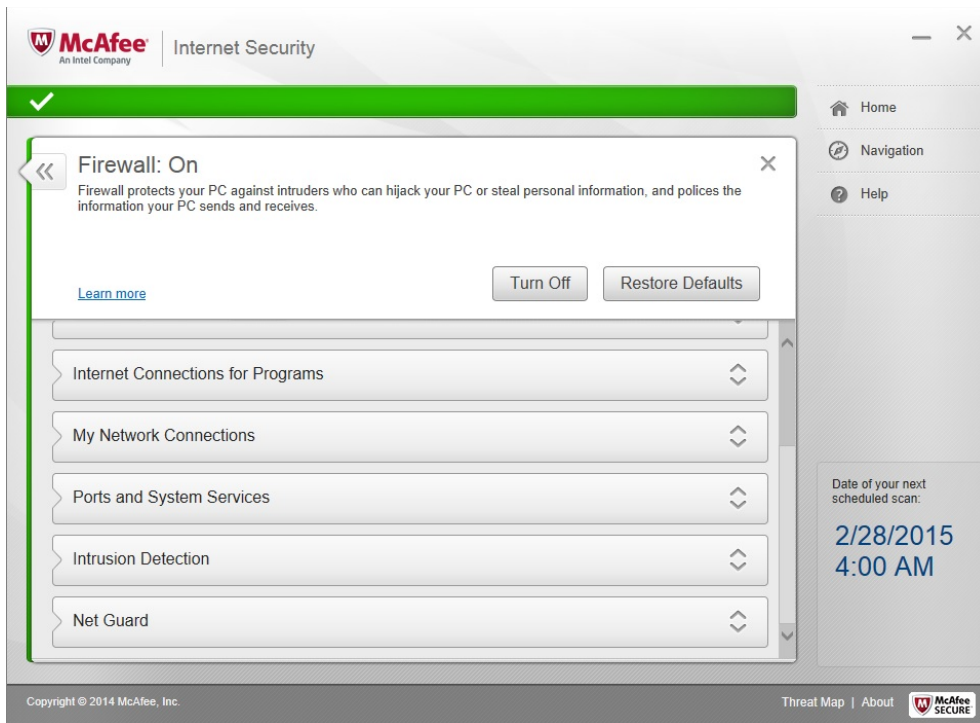
Step 1 – Open McAfee Control Panel



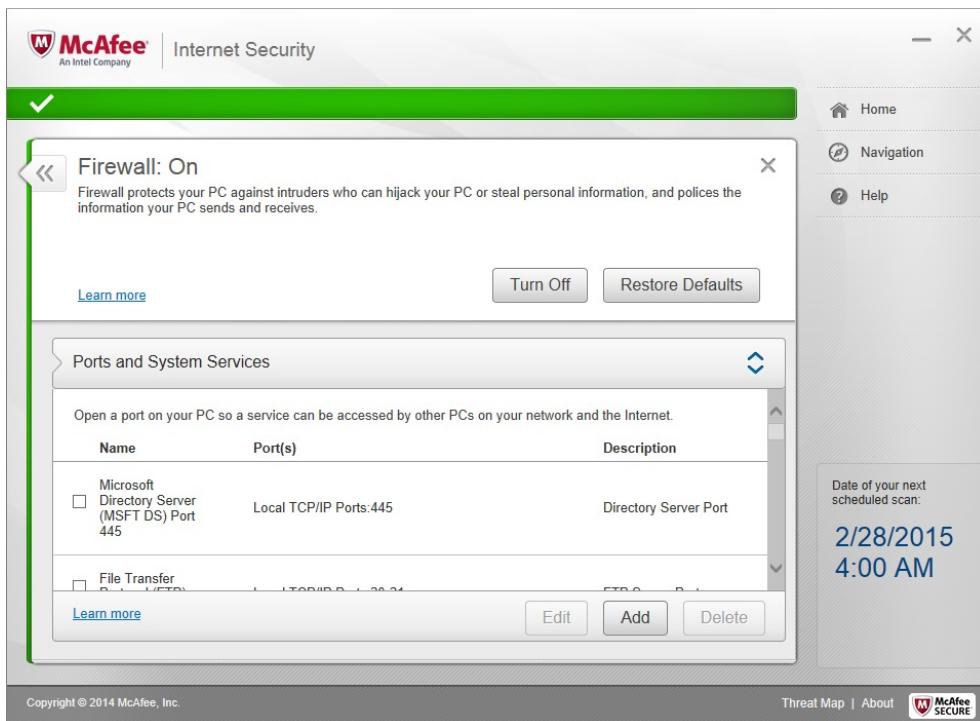
Step 2 – Select *Web and Email Protection*



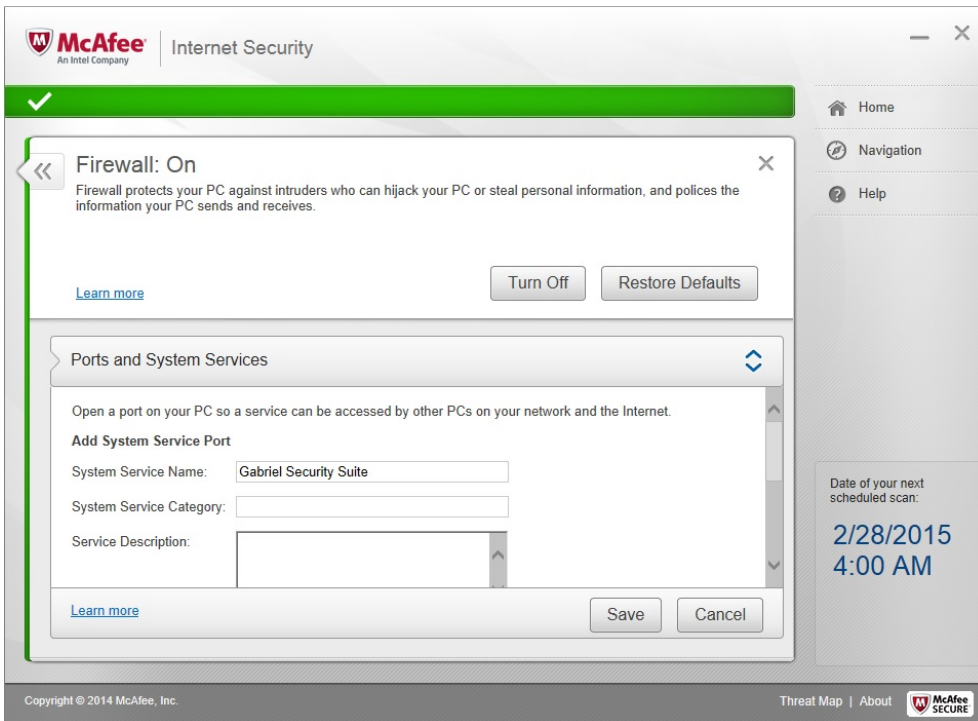
Step 3 – Select *Firewall*



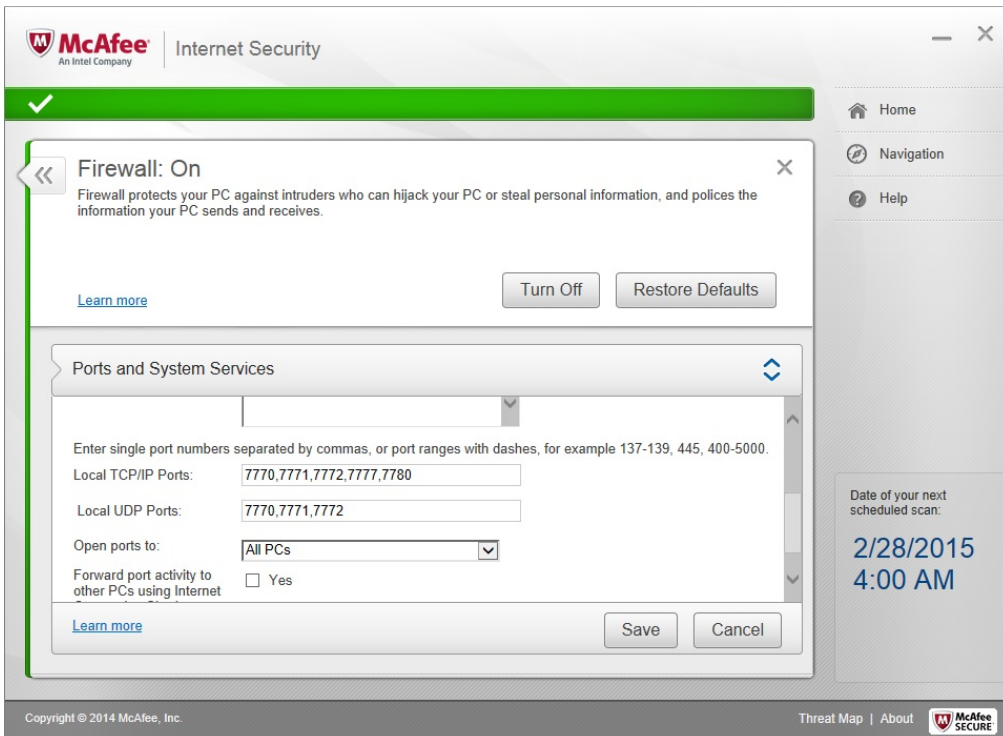
Step 4 – Select *Ports and System Services*



Step 5 – Select *Add* and enter a System Service Name: (e.g. Gabriel Security Suite)



Step 6 – Scroll down and enter TCP ports (7770, 7771, 7772, 7777, 7780) and UDP ports (7770, 7771, 7772) and select Open ports to: *All PCs* as shown. Select *Save*



Start Gabriel, it should now work with McAfee firewall enabled.